



LUDWIG-  
MAXIMILIANS-  
UNIVERSITÄT  
MÜNCHEN

MUNICH INTERNATIONAL  
SUMMER UNIVERSITY



MUNICH **MISU** <sup>LMU</sup>  
INTERNATIONAL SUMMER  
UNIVERSITY

# Munich University Summer Training in German and European Law (MUST)

6 July – 30 July 2026

[www.must-misu.de](http://www.must-misu.de)



# GENERAL

Munich University Summer Training (MUST) was founded in 2001 and is organized by the Faculty of Law of the Ludwig-Maximilians-Universität (LMU) in cooperation with the International University Club Munich (IUCM).

The programme aims to give a basic understanding of German Law and European Union Law.

The European Union is one of the largest economic areas in the world. Within the European Union, Germany is an important member in terms of both population and economic power. Doing business in Europe and Germany requires a thorough knowledge of the legal system and the norms and regulations governing the transaction in question. There is an increasing demand for foreign lawyers with a basic understanding of European and German law.

Lawyers with the corresponding background will be able to collaborate with German lawyers in cross-border transactions or to work in Germany. In addition, having an understanding of another legal system enhances the intellectual capabilities necessary for excellence both in legal practice and academia. German legal scholarship, in particular, is renowned for its systematic approach to law.

Last but not least, this programme will bring together excellent lawyers and law students from a variety of countries, providing the opportunity to create a network of programme alumni. The Faculty of Law at LMU is eager to support a network of this kind.



# OBJECTIVES

## **Law of Contracts**

This course explores the German concepts and rules for the conclusion of contracts, mistake, pre-contractual duties and strategies for avoiding an unwanted contract. There will be a secondary focus on breach of contract and the system of remedies available in this case. The class will conclude with a discussion of special rules designed for the protection of consumers and electronic commerce.

## **Law of Property**

This class is dedicated to analysing the general principles of property law – among them the principle of abstraction as one of the most characteristic principles of German law. We will also discuss the functions, protection, and rights associated with the possession and ownership of property as well as the requirements for the transfer of property, including acquisition in good faith. Finally, the class will also briefly explore limited real rights to movable and immovable property..

## **Intellectual Property Law**

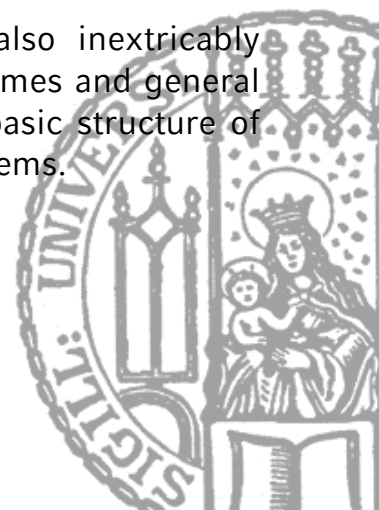
This course will introduce participants to German and European Intellectual Property Law. The course will combine theory and law. In the first session, the class will start with theoretical justifications of intellectual property and outline common principles thereof. In the later sessions, participants will gain an overview of the relevant black letter law in the three conventional IP subjects (patents, copyright, and trademark).

## **Constitutional Law**

This course will impart basic knowledge of German governmental institutions, in particular constitutional review. This knowledge is necessary to understand German public law. The meaning and importance of fundamental rights will also be discussed.

## **Law of Torts**

Tortious liability is a part of general civil law, but is also inextricably intertwined with the insurance systems, social security schemes and general questions of risk allocation. This course will illustrate the basic structure of German tort law and will focus on some of its essential problems.



# OBJECTIVES

## **Tax Law**

The first part will give a short introduction into German tax law, covering the constitutional prerequisites for taxation as well as an overview of income tax law, corporation tax law, inheritance tax law and value added tax law. The second part will cover the basics of International and European tax law, including double taxation treaties.

## **European Union Law**

The first part of the course on EU Law is designed to provide participants with a basic understanding of the institutional structure of the EU and of the fundamental features of the EU legal system. In the second part of the course, participants will review cases with the objective of understanding the application of EU law to economic transactions.

## **Corporate and Securities Law**

This part of the course covers issues such as: forms of incorporation under German law; the stock corporation; the limited liability company; partnerships and companies; the law of corporate groups; takeovers, mergers and acquisitions; corporate restructuring; organization of the German securities market; the primary and secondary market. The material presented will focus not only on the relevant issues under German national law, but also under European Law (which is particularly influential in this area) as well as covering the underlying economic analysis and comparative aspects.

## **Competition Law**

The course discusses the control of private economic power through the competition laws in the EU and in Germany. In particular, it will provide insights into the assessment of anticompetitive agreements, unilateral behavior of dominant firms as well as into the subject of merger control.



# ACADEMIC HOST



## **Faculty of Law**

Ludwig-Maximilians-Universität München

## **Patronage**



**Prof. Dr. jur. Thomas Ackermann, LL.M. (Cambridge)**

Head of Programme

Chair of Private Law, European and International Commercial Law

Ludwig-Maximilians-Universität



**Konstantin Bachmann, LL.M. oec.**

Research Assistant, Programme Manager

Chair of Private Law, European and International Commercial Law

Ludwig-Maximilians-Universität



# LECTURERS



**PD Dr. Daniel Dürschmidt, LL.M. (Univ. of Sydney)**

Chair of German, European and International Tax Law as well as Public Law, LMU Munich



**Eva Fischer**

Research Assistant, Chair of Private Law, European and International Commercial Law, LMU Munich



**Dr. Patrick Hell, LL.M. (Cambridge)**

Attorney, Law Firm Hengeler Mueller, Munich



**Ass. jur. Diana Liebenau, LL.M. (Harvard)**

Research Assistant, Chair of Private Law, Intellectual Property and Competition Law, LMU Munich



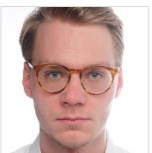
**Dr. Hans Christian Mayer, M. Jur (Oxford)**

Judge, Court of Appeals, Munich



**Dr. Daniel Petzold**

Attorney, Law Firm LUTZ | ABEL, Munich



**Dr. Johannes M. Blaschczok**

Post-Doc Research Fellow, Chair of Private Law, European and International Commercial Law, LMU Munich



**Prof. Dr. Walther Michl, LL.M.EUR.**

Professor, Chair for Public Law,  
University of the Bundeswehr in Munich





# COURSE REQUIREMENTS

With an ambitious academic content scope, we assume that MUST participants will be prepared to work hard both in class and in individual study.

Prerequisites for participation are a minimum of one year of legal training at a university. However, a law degree is not necessary.

Applicants need to have a very good command of written and spoken English. All MUST courses and lectures will be taught in English and the exam is also expected to be written in English.

Even though we do not require students to upload language test results during the online application process, we urge students with poor language skills to abstain from applying. Professors will not be able to accommodate language difficulties. Knowledge of German is not a prerequisite.

## **Notice:**

All participants are required to have their own tablet or computer available for use in class. The MUST programme cannot provide computers.



# GRADES & CREDITS

The course counts for the ECTS system (6 credits).

The Academic Board of the LMU Munich defines the requirements and contact hours for successful completion of the courses as follows:

- Regular attendance (absence max. 6 lessons)
- Preparation for the seminars and active participation
- Attendance and contributions to lectures
- Passing written exams

## Transcripts

Every student will receive an official transcript after the successful completion of all programme requirements. The transcript will show the course name and contact hours, the number of acquired credits as well as the achieved grades.

## Credit Transfer

Most international colleges and universities accept credits from MUST. However, each institution has its own policy regarding credit acceptance from other institutions. We strongly recommend that students consult their academic advisor and/or professor to receive credit transfer approval before applying to MUST. Students who would like to transfer credits to their home universities should print out all documents, contact the professor or study abroad advisor and ask for credit and grade approval.

Participants from the United States of America may petition their law schools for credit before the course starts.





# TARGET GROUP

With an ambitious scope of academic content, we assume that MUST participants will be prepared to work hard both in and outside of class.

Applicants need to have a good command of written and spoken English. All MUST courses and lectures will be taught in English and the exam is also expected to be written in English.

After your application has been reviewed, you might receive an e-mail asking for proof that you have successfully completed an English-language test (e.g. TOEFL or IELTS). English native speakers don't need to provide an English-language test.

To apply for this programme, applicants need at least one year of legal training at a university. However, a law degree is not necessary.



# FEES & PAYMENT

## **Mandatory fees:**

- 200,00 EUR Regular registration fee. Please note that the registration fee is not an application fee and does not arise if your application is rejected.
- 557,00 EUR Tuition

## **Optional fees:**

- 50,00 EUR German class
- 600,00 EUR Accommodation (single room 3 July – 31 July 2026)

## **Deadline for application:**

- Application deadline: 1 April 2026

## **Deadlines for payment:**

- Registration fee payment deadline: Immediately after receiving the PDF admission letter by e-mail even for tuition waiver
- Tuition payment deadline: One week after admission



# CANCELLATION

## **Cancellation after the registration deadline:**

- The registration fee will not be refunded. If accommodation was booked, the deposit for the rent will not be refunded and has to be paid.

## **Cancellation 6 weeks before beginning of the course:**

- The registration fee will not be refunded. If accommodation was booked, the deposit for the rent will not be refunded and only 50% of the tuition will be refunded.

## **Cancellation 3 days before beginning of the course:**

- The registration fee will not be refunded. If accommodation was booked, the deposit for the rent will not be refunded and only 20% of the tuition will be refunded.
- Once the course has started, no refund will be granted.

## **Cancellation by MISU**

- All fees and tuition will be fully refunded.

**\* All bank charges are excluded from repayment.**



# ACCOMMODATION

## Arrival

- 3 July 2026 (Check-in 02:00 p.m. - 4:30 p.m.)

## Departure

- 31 July 2026 (Check-out 10:00 a.m.)

## Student Residence

The participants will reside in the student residence “Olympisches Dorf”. The student housing facility is located only a few subway stations away from the classroom and the city center.

## About the rooms

- Each student will have their own private apartment, which is fully furnished and has its own small kitchen and bathroom (toilet and shower).
- The rooms are equipped with bedding (sheets and blankets) which can be washed at one of the laundry rooms in the building.
- Kitchen utensils (cutlery, cups, plate and pots) and towels will not be provided. We ask you to acquire these items according to your own personal needs.
- During their stay, students are responsible to clean their room by themselves.
- Internet access is available via Ethernet (LAN) cable. The cable is not provided. Please bring your own.
- Please note that student residences are geared towards students' needs and financial means. As such, do not expect facilities to meet claims on luxury comfort and on pools.
- Students with health impairment are kindly asked to inform us in the application process.



# REGISTRATION

## Application materials for the MUST:

### 1. Transcript

Participants currently studying should enclose a transcript of all previous exams taken to date. The transcript must be translated into English or German and must explain the grading system.

In regard to previous higher education, a copy of the results from final exams, translated into English or German, should be enclosed.

### 2. Curriculum vitae (CV)

Please use the Euro Pass (<http://europass.cedefop.europa.eu>) if you do not have your own form.

### 3. Statement of motivation

Applicants should write a short statement of no more than one computer typed page in English.

### 4. English language certificate (not mandatory)

You may attach proof that you have successfully completed an English language test (e.g. TOEFL or IELTS). This, however, is not a prerequisite for the application. English native speakers don't need to provide an English language test.

## Deadline for the registration:

**Registration deadline: 1 April 2026, 12:00 p.m. CEST**

Applicants will be informed in March (first application period), and in April (second application period) whether or not they have been offered a place on the course and a tuition waiver.

Please apply here: [https://application.iucm.de/Form/must\\_registration](https://application.iucm.de/Form/must_registration)



# CONTACT

## Academic Contact

**Mr. Konstantin Bachmann, LL.M. oec.**

Scientific Assistant, Programme Manager  
MUST Programme  
Faculty of Law, LMU Munich  
Ludwigstr. 29  
80539 Munich  
Germany

E-Mail: [must@jura.uni-muenchen.de](mailto:must@jura.uni-muenchen.de)

Web: [www.must-misu.de](http://www.must-misu.de)

## Administration / Application Contact

**Ms. Jasmin Puschner**

Senior Programme Coordinator  
Munich International Summer University (MISU)  
LMU Munich  
c/o International Office  
Geschwister-Scholl-Platz 1  
80539 Munich

E-Mail: [office@must-misu.de](mailto:office@must-misu.de)

Web: [www.must-misu.de](http://www.must-misu.de)

